

# Daily Market Report

2026-03-09

## Market Commentary & News

► **KSA Market Performance:** The TASI index surged 2.1% on Sunday, with almost all sectors ending in the positive territory. The banking sector advanced 1.0% supported by Al Rajhi (+1.8%) and ANB (+2.0%). Similarly, the energy and materials sectors also grew 4.1% and 3.6%, respectively. Individually, Alujain, Saudi Kayan, Chemanol, GACO, and Al Rajhi Takaful hit the upper circuit. Conversely, Al Rajhi Reit (-2.2%), Mulkia Reit (-2.0%), and Azm (-1.9%), were among the top losers.

► **Today's clues:** US futures are trading lower, mainly due to a spike in oil prices raising concerns of a slowdown in the US economy. Asian markets are trading lower on Monday, pressured by the largest single-day gain in oil prices since late 1998. Oil prices breached USD115/barrel level on the closure of the Strait of Hormuz, leading major OPEC producers to cut production after running out of storage.

### News

- Riyadh Cement net profit declined 26.3% y/y in 4Q25, and revenue moderated 4.7% y/y (Tadawul).
- SMC Healthcare net profit rose 412.5% y/y in 4Q25, and revenue grew 24.4% y/y. The board announced cash dividend of SAR0.32/sh for 2025, yielding 1.7% annually (Tadawul).
- Nahdi posted an 11.5% y/y growth in net profit in 4Q25, while revenue rose 9.6% y/y. It also announced a cash dividend of SAR3.00/sh for 2H25, annually yielding 5.5% (Tadawul).
- Nayifat recorded a net loss of SAR185.8mn in 4Q25, compared to a net profit of SAR36.8mn in 4Q24. Revenue declined 14.3% y/y to SAR71.51mn in 4Q25 (Tadawul).
- Avalon Pharma announced a dividend of SAR1.32/sh for 2H25, leading to an annual yield of 2.3% (Tadawul).
- Paper Home net profit grew 0.2% y/y in 2H25, and revenue increased 12.4% in the same period (Tadawul).
- Masar extends reservation agreements for two land plots worth SAR438.8mn by six months with Mousa Abdulaziz Al Mousa & Sons due to procedural reasons (Tadawul).
- SADAFCO's board recommended repurchase of up to 2.7mn ordinary shares as treasury shares (Tadawul).
- Nama Chemicals received a reservation and execution notice regarding a SAR276.0mn SIDF loan, and requested court approval for a payment extension until May 2026 and loan rescheduling (Tadawul).
- SISCO Holding net profit surged 79.2% y/y to SAR34.7mn in 4Q25, and revenue rose 40.4% y/y to SAR588.3mn (Tadawul).

Saudi Market	Last close	1D%	YTD%	1Y%
TASI	11,007	2.1%	4.9%	-7.0%
Div Yield* (%)	3.5%	Turnover (SAR bn)	5.60	
PE* (Fwd)	25.8x	Adv/Decline	244 / 23	
PE (12m Trailing)	18.7x	50DMA	10,906	
PB	2.2x	100DMA	10,953	
M.Cap (SAR bn)	9,682	200DMA	10,971	

Global Markets	Last close	1D%	YTD%	P/E*
SPX	6,740	-1.3%	-2%	21.4x
Nasdaq	22,388	-1.6%	-4%	25.2x
FTSE 100	10,285	-1.2%	4%	13.8x
DAX	23,591	-0.9%	-4%	15.3x
Shanghai	4,099	-0.6%	3%	15.9x
Nikkei	52,762	-5.1%	5%	22.5x

Commodities	Spot	1D%	YTD%	1Y%
Brent (US\$/b)	106.9	15.3%	76%	52%
WTI (US\$/b)	102.9	13.2%	80%	62%
NG (US\$/mmbtu)	3.3	4.4%	-10%	-24%
Gold (US\$/t)	5,127	-0.9%	19%	77%
Copper (US\$/t)	12,862	-0.3%	4%	32%

Key Currencies	Spot	1D%	YTD%	1Y%
Dollar Index	99.3	0.3%	1%	-4%
CNY/USD	6.9	-0.1%	1%	5%
USD/EUR	1.16	-0.5%	-2%	7%
USD/GBP	1.33	-0.6%	-1%	3%
Bitcoin (US\$)	67,582	0.5%	-23%	-19%

Rates	Spot	% chg
SOFR (%) - Overnight	3.66	0.0
SAIBOR (%) - 3M	4.79	1.5
SAIBOR (%) - 6M	5.24	0.2
SAIBOR (%) - 12M	4.80	-0.9
US 2Y Govt bond (%)	3.61	1.4
US 10Y Govt bond (%)	4.19	1.2
Saudi 10Y Govt Bond (%)	4.75	0.0

Source: Bloomberg, \*1 year forward Bloomberg consensus

# Daily Market Report

2026-03-09

## Index Movers

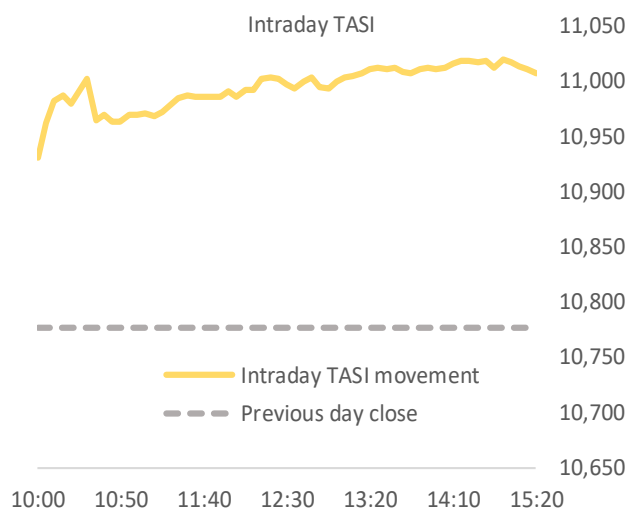
Up	1D%	Down	1D%
Aramco	4.1%	SNB	-0.2%
Al Rajhi	1.8%	Bupa	-1.4%
SABIC	8.0%	Acwa Power	-0.2%
SAFCO	5.2%	Rasan	-0.6%
AlMarai	2.5%	Americana	-1.0%

Top Gainers	Last Price	1D%
Chemanol	7.26	10.0%
Alujain	26.84	10.0%
Kayan	5.39	10.0%
GACO	14.24	10.0%
Rajhi Tak.	90.00	10.0%

Top Losers	Last Price	1D%
AlRajhi REIT	7.85	-2.2%
Mulkia REIT	4.41	-2.0%
AZM	22.84	-1.9%
Bupa	173.50	-1.4%
ALMAJED OUD	158.00	-1.2%

Most active by Vol	Last Price	Vol
Americana	1.99	36.44MLN
Aramco	26.94	33.71MLN
Chemical	7.65	19.56MLN
Kayan	5.39	18.28MLN
EIC	16.20	7.52MLN

Most active by Val	Last Price	Val (SAR mn)
Aramco	26.94	910
SAFCO	139.80	309
SABIC	59.70	302
Al Rajhi	102.80	240
Chemical	7.65	148



Sectorial Performance	Index mover*	1D%
TASI		2.1%
Banks	17.0%	1.0%
Materials	20.9%	3.6%
Energy	34.0%	4.1%
Telecom	2.6%	1.0%
Food & Bev.	4.3%	3.3%
Media	1.0%	4.4%
Healthcare	4.0%	2.2%
Capital Goods	2.3%	2.1%
Consumer Staples Retail	1.1%	3.0%
Consumer Services	0.7%	1.2%
Transport	1.2%	2.2%
Software	1.0%	2.1%
Commercial	0.7%	3.1%
Consumer Durables	0.1%	1.9%
Utilities	0.3%	0.2%
Insurance	1.1%	1.0%
Real Estate	4.4%	2.2%
Pharma	0.3%	1.7%
REITs	-0.1%	-0.4%
Retailing	1.6%	2.0%
Diversified Financials	1.6%	4.7%

Source: Bloomberg; \*indicates the impact on index movement

# Daily Market Report

2026-03-09



## Disclaimer

This research report has been prepared by GIB Capital, Riyadh, Saudi Arabia. It has been prepared for the general use of GIB Capital's clients and may not be altered, redistributed, retransmitted, or disclosed, in whole or in part, or any form or manner, without the express written consent of GIB Capital. Receipt and review of this research document constitute your agreement not to redistribute, retransmit, or disclose to others the contents, opinions, conclusion, or information contained in this document before public disclosure of such information by GIB Capital. The information contained was obtained from various public sources believed to be reliable, but we do not guarantee its accuracy. GIB Capital makes no representations or warranties (express or implied) regarding the data and information provided and GIB Capital does not represent that the information content of this document is complete, or free from any error, not misleading, or fit for any particular purpose. This research document provides general information only. Neither the information nor any opinion expressed constitutes an offer or an invitation to make an offer, to buy or sell any securities or other investment products related to such securities or investments. It is not intended to provide personal investment advice, and it does not take into account the specific investment objectives, financial situation, and the particular needs of any specific person who may receive this document.

Investors should seek financial, legal, or tax advice regarding the appropriateness of investing in any securities, other investment, or investment strategies discussed or recommended in this document and should understand that statements regarding prospects may not be realized. Investors should note that income from such securities or other investments, if any, may fluctuate and that the price or value of such securities and investments may rise or fall. Fluctuations in exchange rates could have adverse effects on the value of or price of, or income derived from, certain investments. Accordingly, investors may receive back less than originally invested. GIB Capital or its officers (including research analysts) may have a financial interest in securities of the issuer(s) or related investments, including long or short positions in securities, warrants, futures, options,

derivatives, or other financial instruments. GIB Capital may from time to time perform investment banking or other services for, solicit investment banking or other business from, any company mentioned in this research document. GIB Capital and employees shall not be liable for any direct, indirect, or consequential loss or damages that may arise, directly or indirectly, from any use of the information contained in this research document. Where the report contains or refers to a recommendation about a specific security or securities service, please note that it may not be suitable for all recipients. Please note that the achievement of any price target may be impeded by general market and economic trends and other external factors, or if a company's profits or operating performance exceed or fall short of our expectations

This research document and any recommendations contained are subject to change without prior notice. GIB Capital assumes no responsibility to update the information in this research document. This research document is not directed to, or intended for distribution to or use by, any person or entity who is a citizen or resident of or located in any locality, state, country, or other jurisdiction where such distribution, publication, availability, or use would be contrary to law, or which would subject GIB Capital to any registration or licensing requirement within such jurisdiction

The principal activities of GIB Capital are Dealing, Custody, Managing, Arranging, and Advising according to the Capital Market Authority ("CMA") License No. 07078-37.

Contact us for queries:

Sell Side Research Department,  
GIB Capital,  
B1, Granada Business & Residential Park,  
Eastern Ring Road, P.O. Box 89589, Riyadh 11692