

# Daily Market Report

2026-02-19

## Market Commentary & News

- ▶ **KSA Market Performance:** The TASI index rebounded 0.5% on Wednesday, primarily supported by a 1.0% uptick in the banking sector, driven by SNB (+1.7%), BSF (+3.0%), and Alinma (+2.0%). Individually, Enaya jumped 8.6%, and Bupa Arabia advanced 8.0%, while Retal and Elm increased 6.0% and 5.2%, respectively. On the other hand, Care hit the lower circuit, Yansab declined 4.9%, and MBC Group fell 4.1%.
- ▶ **Today's clues:** US markets ended higher on Wednesday, supported by gains in the technology stocks along with an uptick in financial and energy stocks. Asian markets are trading mostly higher on Wall Street gains. Hong Kong and China markets remained closed for the New Year. Oil prices increased sharply amid rising geopolitical tensions.

### News

- ▶ Al Akaria leased Al Reef Residential Compound to AMSA View for Hotel Apartments, for 20 years at SAR1.2bn (Tadawul).
- ▶ Shaker's net profit increased 10.9% y/y in 4Q25, while revenue declined 6.0% in the same period (Tadawul).
- ▶ Armah Sports recorded 18.6% y/y growth in net profit during 2H25, and revenue increased 17.9% y/y (Tadawul).
- ▶ Malath Insurance net profit fell 53.7% y/y in 4Q25 while insurance revenue rose 20.7% y/y in same period (Tadawul).
- ▶ TMC signed a SAR52.8mn contract with NUPCO to supply and install two field hospitals and one mobile clinic for the Security Forces' specialized clinics in Makkah (Tadawul).
- ▶ SHL Finance renewed a SAR200.0mn Sharia-compliant credit facility with Emirates NBD for 5 years (Tadawul).
- ▶ Red Sea's subsidiary signed a 12-month MEP subcontract with the ABCC-UCC JV in Riyadh, valued at 6.8% of 2025 revenue. The subsidiary also signed a 48-month framework agreement with King Salman International Airport Development Company for call-off-based MEP enabling works (Tadawul).
- ▶ Almarai's board recommended buyback of 10mn ordinary shares using internal funds to hold as treasury shares for its Employee Long-Term Incentive Plan (Tadawul).
- ▶ Maersk's subsidiary APM Terminals acquired a 37.5% stake in the South Container Terminal at Jeddah Islamic Port (Argaam).
- ▶ HUMAIN, a PIF portfolio company, invested USD3.0bn in xAI during its Series E round and later converted the stake into SpaceX shares (Argaam).

Saudi Market	Last close	1D%	YTD%	1Y%
TASI	11,155	0.5%	6.3%	-9.4%
Div Yield* (%)	3.5%	Turnover (SAR bn)	3.76	
PE* (Fwd)	17.5x	Adv/Decline	151 / 102	
PE (12m Trailing)	18.9x	50DMA	10,856	
PB	2.3x	100DMA	11,044	
M.Cap (SAR bn)	9,431	200DMA	11,006	

Global Markets	Last close	1D%	YTD%	P/E*
SPX	6,881	0.6%	1%	26.8x
Nasdaq	22,754	0.8%	-2%	37.8x
FTSE 100	10,686	1.2%	8%	16.6x
DAX	25,278	1.1%	3%	18.2x
Shanghai	4,082	-1.3%	3%	15.7x
Nikkei	57,606	0.8%	14%	24.5x

Commodities	Spot	1D%	YTD%	1Y%
Brent (US\$/b)	70.5	0.2%	16%	-7%
WTI (US\$/b)	65.4	0.3%	14%	-4%
NG (US\$/mmbtu)	3.0	0.3%	-18%	-29%
Gold (US\$/t)	4,991	0.3%	16%	70%
Copper (US\$/t)	12,912	2.3%	4%	36%

Key Currencies	Spot	1D%	YTD%	1Y%
Dollar Index	97.8	0.1%	-1%	-9%
CNY/USD	6.9	0.0%	1%	6%
USD/EUR	1.18	0.1%	0%	13%
USD/GBP	1.35	-0.1%	0%	7%
Bitcoin (US\$)	66,780	0.7%	-24%	-31%

Rates	Spot	% chg
SOFR (%) - Overnight	3.71	0.0
SAIBOR (%) - 3M	4.96	1.3
SAIBOR (%) - 6M	5.20	-0.4
SAIBOR (%) - 12M	4.78	-0.5
US 2Y Govt bond (%)	3.47	0.3
US 10Y Govt bond (%)	4.10	0.3
Saudi 10Y Govt Bond (%)	4.52	0.0

Source: Bloomberg, \*1 year forward Bloomberg consensus

# Daily Market Report

2026-02-19

## Index Movers

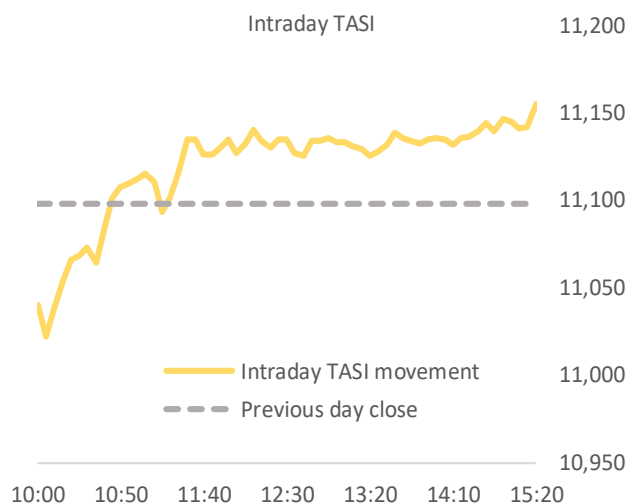
Up	1D%	Down	1D%
SNB	1.7%	STC	-2.7%
Aramco	0.6%	AlHabib	-1.4%
BSF	3.0%	Mobily	-0.9%
Al Rajhi	0.4%	YANSAB	-4.9%
Alinma	2.0%	CARE	-10.0%

Top Gainers	Last Price	1D%
Enaya	8.70	8.6%
Bupa	179.30	8.0%
Retal	13.00	6.0%
Elm	712.50	5.2%
AZM	24.30	4.7%

Top Losers	Last Price	1D%
CARE	141.50	-10.0%
YANSAB	27.20	-4.9%
MBC GROUP	31.08	-4.1%
Dallah	108.30	-3.2%
SVCP	19.72	-2.9%

Most active by Vol	Last Price	Vol
Americana	2.08	50.71MLN
BSF	19.88	8.31MLN
Jahez	12.65	8.12MLN
Kayan	5.60	7.53MLN
AlAseel	3.74	7.07MLN

Most active by Val	Last Price	Val (SAR mn)
Al Rajhi	105.00	262
STC	43.60	257
BSF	19.88	164
SNB	42.80	136
Aramco	25.60	114



Sectorial Performance	Index mover*	1D%
TASI		0.5%
Banks	69.0%	1.0%
Materials	-0.4%	0.0%
Energy	20.7%	0.6%
Telecom	-21.5%	-1.8%
Food & Bev.	2.5%	0.5%
Media	1.0%	0.9%
Healthcare	-11.1%	-1.4%
Capital Goods	7.0%	1.6%
Consumer Staples Retail	0.5%	0.3%
Consumer Services	1.0%	0.4%
Transport	0.2%	0.1%
Software	7.4%	3.1%
Commercial	-0.2%	-0.2%
Consumer Durables	0.2%	0.9%
Utilities	-1.3%	-0.2%
Insurance	13.5%	2.9%
Real Estate	8.7%	1.0%
Pharma	-0.3%	-0.4%
REITs	0.3%	0.2%
Retailing	-0.4%	-0.1%
Diversified Financials	-0.2%	-0.1%

Source: Bloomberg; \*indicates the impact on index movement

# Daily Market Report

2026-02-19



## Disclaimer

This research report has been prepared by GIB Capital, Riyadh, Saudi Arabia. It has been prepared for the general use of GIB Capital's clients and may not be altered, redistributed, retransmitted, or disclosed, in whole or in part, or any form or manner, without the express written consent of GIB Capital. Receipt and review of this research document constitute your agreement not to redistribute, retransmit, or disclose to others the contents, opinions, conclusion, or information contained in this document before public disclosure of such information by GIB Capital. The information contained was obtained from various public sources believed to be reliable, but we do not guarantee its accuracy. GIB Capital makes no representations or warranties (express or implied) regarding the data and information provided and GIB Capital does not represent that the information content of this document is complete, or free from any error, not misleading, or fit for any particular purpose. This research document provides general information only. Neither the information nor any opinion expressed constitutes an offer or an invitation to make an offer, to buy or sell any securities or other investment products related to such securities or investments. It is not intended to provide personal investment advice, and it does not take into account the specific investment objectives, financial situation, and the particular needs of any specific person who may receive this document.

Investors should seek financial, legal, or tax advice regarding the appropriateness of investing in any securities, other investment, or investment strategies discussed or recommended in this document and should understand that statements regarding prospects may not be realized. Investors should note that income from such securities or other investments, if any, may fluctuate and that the price or value of such securities and investments may rise or fall. Fluctuations in exchange rates could have adverse effects on the value of or price of, or income derived from, certain investments. Accordingly, investors may receive back less than originally invested. GIB Capital or its officers (including research analysts) may have a financial interest in securities of the issuer(s) or related investments, including long or short positions in securities, warrants, futures, options,

derivatives, or other financial instruments. GIB Capital may from time to time perform investment banking or other services for, solicit investment banking or other business from, any company mentioned in this research document. GIB Capital and employees shall not be liable for any direct, indirect, or consequential loss or damages that may arise, directly or indirectly, from any use of the information contained in this research document. Where the report contains or refers to a recommendation about a specific security or securities service, please note that it may not be suitable for all recipients. Please note that the achievement of any price target may be impeded by general market and economic trends and other external factors, or if a company's profits or operating performance exceed or fall short of our expectations

This research document and any recommendations contained are subject to change without prior notice. GIB Capital assumes no responsibility to update the information in this research document. This research document is not directed to, or intended for distribution to or use by, any person or entity who is a citizen or resident of or located in any locality, state, country, or other jurisdiction where such distribution, publication, availability, or use would be contrary to law, or which would subject GIB Capital to any registration or licensing requirement within such jurisdiction

The principal activities of GIB Capital are Dealing, Custody, Managing, Arranging, and Advising according to the Capital Market Authority ("CMA") License No. 07078-37.

Contact us for queries:

Sell Side Research Department,  
GIB Capital,  
B1, Granada Business & Residential Park,  
Eastern Ring Road, P.O. Box 89589, Riyadh 11692