

Daily Market Report

2026-03-12

Market Commentary & News

- ▶ **KSA Market Performance:** The TASI index rose marginally by 0.1% on Wednesday. The banking sector advanced 0.1%, driven by a 1.4% rise in SAB and 1.3% gains in BSF. The energy and materials sectors advanced 0.9% and 0.5%, respectively. Among the individual names, Saleh Al Rashid surged 14.4% on debut while Retal and Arabian Mills gained 4.3% and 2.5%, respectively. On the other hand, Jazadco (-8.9%), Marafiq (-7.1%), and Almoosa (-6.8%) were among the top losers.
- ▶ **Today's clues:** US markets ended mostly lower, as investor concerns about rising costs fueled fears of increasing inflation. Asian markets are trading lower amid volatile oil prices and rising tensions in the Middle East. Oil prices climbed back to USD100/barrel on increasing supply concerns driven by escalating geopolitical tensions.

News

- ▶ Mouwasat's net profit surged 38.7% y/y in 4Q25, and revenue grew 17.1% y/y. The board announced a cash dividend of SAR1.125/sh for 2H25, yielding 3.3% annually (Tadawul).
- ▶ Arabian Mills recorded a 0.5% y/y decline in net profit during 4Q25, while revenue rose 3.1% in the same period (Tadawul).
- ▶ NCLE's net profit rose 18.1% y/y in 2Q26 for the period ended 31 January 2026, while revenue rose 15.3% y/y (Tadawul)
- ▶ BCI posted a 70% y/y net profit growth in 4Q25, while revenue declined marginally 0.4% y/y (Argaam).
- ▶ Alandalus net loss narrowed 50.2% y/y in 4Q25, while revenue grew 1.4% in the same period (Tadawul).
- ▶ Catrion Catering signed a SAR262.0mn agreement with King Faisal Specialist Hospital & Research Center in Riyadh for 5 years to provide catering services (Tadawul).
- ▶ Almunajem Foods signed a EUR20.5mn binding agreement with France Poultry to acquire the "Doux" and "Supreme" trademark rights in KSA, GCC countries, and Yemen (Tadawul).
- ▶ Dammam commercial court issued a preliminary ruling ordering Chemanol to pay SAR15.39mn to the former owners of Addar Chemicals Company (Tadawul).
- ▶ Saudi Cable received compensation of SAR44.1mn for the expropriation of its 48.9ksqm land in Jeddah. The company also revised its rights issue plan to offer 12.5mn shares at SAR32/sh each to raise SAR400.0mn (Tadawul).

Saudi Market	Last close	1D%	YTD%	1Y%
TASI	10,942	0.1%	4.3%	-6.5%
Div Yield* (%)	4.1%	Turnover (SAR bn)	4.94	
PE* (Fwd)	15.3x	Adv/Decline	78 / 179	
PE (12m Trailing)	25.7x	50DMA	10,934	
PB	2.2x	100DMA	10,932	
M.Cap (SAR bn)	9,703	200DMA	10,969	

Global Markets	Last close	1D%	YTD%	P/E*
SPX	6,776	-0.1%	-1%	21.5x
Nasdaq	22,716	0.1%	-2%	25.6x
FTSE 100	10,354	-0.6%	4%	13.9x
DAX	23,640	-1.4%	-3%	15.3x
Shanghai	4,120	-0.3%	4%	16.0x
Nikkei	54,161	-1.6%	8%	22.8x

Commodities	Spot	1D%	YTD%	1Y%
Brent (US\$/b)	98.7	7.3%	62%	39%
WTI (US\$/b)	93.3	6.9%	63%	46%
NG (US\$/mmbtu)	3.3	1.8%	-11%	-20%
Gold (US\$/t)	5,154	-0.4%	19%	76%
Copper (US\$/t)	13,042	-0.7%	5%	35%

Key Currencies	Spot	1D%	YTD%	1Y%
Dollar Index	99.5	0.2%	1%	-4%
CNY/USD	6.9	-0.1%	2%	5%
USD/EUR	1.15	-0.2%	-2%	6%
USD/GBP	1.34	-0.3%	-1%	3%
Bitcoin (US\$)	69,401	-1.8%	-21%	-16%

Rates	Spot	% chg
SOFR (%) - Overnight	3.64	0.0
SAIBOR (%) - 3M	4.76	0.8
SAIBOR (%) - 6M	5.20	-1.6
SAIBOR (%) - 12M	4.77	-0.2
US 2Y Govt bond (%)	3.67	0.4
US 10Y Govt bond (%)	4.24	0.1
Saudi 10Y Govt Bond (%)	4.80	-0.2

Source: Bloomberg, *1 year forward Bloomberg consensus

Daily Market Report

2026-03-12

Index Movers

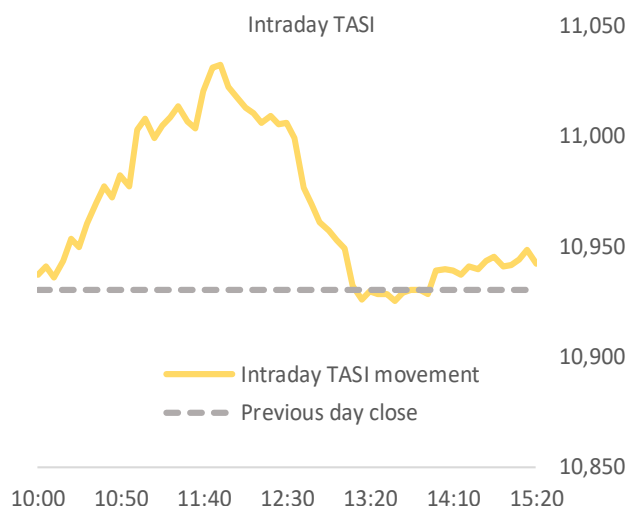
Up	1D%	Down	1D%
Aramco	1.0%	SNB	-0.8%
SABIC	1.4%	Marafiq	-7.1%
Al Rajhi	0.2%	Mobily	-1.0%
SAB	1.4%	EIC	-2.5%
BSF	1.3%	AlHabib	-0.6%

Top Gainers	Last Price	1D%
Saleh Al Rashed	51.50	14.4%
Retal	13.93	4.3%
Emaar EC	9.18	4.2%
Zoujaj	37.58	3.0%
SGS	31.94	2.6%

Top Losers	Last Price	1D%
Jazadco	8.23	-8.9%
Marafiq	29.92	-7.1%
SAICO	9.04	-7.0%
Almoosa	137.80	-6.8%
Alamar	38.34	-5.4%

Most active by Vol	Last Price	Vol
Aramco	27.16	27.96MLN
Americana	1.90	23.07MLN
Chemical	6.90	14.30MLN
EIC	15.73	8.01MLN
Kayan	4.95	7.94MLN

Most active by Val	Last Price	Val (SAR mn)
Aramco	27.16	758
Al Rajhi	101.00	315
Saleh Alrashed	51.50	297
SNB	40.40	150
Alinma	28.66	130



Sectorial Performance	Index mover*	1D%
TASI		0.1%
Banks	45.5%	0.1%
Materials	51.3%	0.5%
Energy	150.6%	0.9%
Telecom	-3.0%	-0.1%
Food & Bev.	-16.7%	-0.6%
Media	1.5%	0.3%
Healthcare	-30.3%	-0.8%
Capital Goods	-34.2%	-1.6%
Consumer Staples Retail	2.8%	0.4%
Consumer Services	-15.4%	-1.4%
Transport	-6.6%	-0.6%
Software	-5.5%	-0.6%
Commercial	-5.4%	-1.3%
Consumer Durables	-1.5%	-1.2%
Utilities	-12.4%	-0.3%
Insurance	-6.6%	-0.3%
Real Estate	21.7%	0.5%
Pharma	-1.6%	-0.5%
REITs	2.4%	0.5%
Retailing	-7.8%	-0.5%
Diversified Financials	-9.0%	-1.4%

Source: Bloomberg; *indicates the impact on index movement

Daily Market Report

2026-03-12



Disclaimer

This research report has been prepared by GIB Capital, Riyadh, Saudi Arabia. It has been prepared for the general use of GIB Capital's clients and may not be altered, redistributed, retransmitted, or disclosed, in whole or in part, or any form or manner, without the express written consent of GIB Capital. Receipt and review of this research document constitute your agreement not to redistribute, retransmit, or disclose to others the contents, opinions, conclusion, or information contained in this document before public disclosure of such information by GIB Capital. The information contained was obtained from various public sources believed to be reliable, but we do not guarantee its accuracy. GIB Capital makes no representations or warranties (express or implied) regarding the data and information provided and GIB Capital does not represent that the information content of this document is complete, or free from any error, not misleading, or fit for any particular purpose. This research document provides general information only. Neither the information nor any opinion expressed constitutes an offer or an invitation to make an offer, to buy or sell any securities or other investment products related to such securities or investments. It is not intended to provide personal investment advice, and it does not take into account the specific investment objectives, financial situation, and the particular needs of any specific person who may receive this document.

Investors should seek financial, legal, or tax advice regarding the appropriateness of investing in any securities, other investment, or investment strategies discussed or recommended in this document and should understand that statements regarding prospects may not be realized. Investors should note that income from such securities or other investments, if any, may fluctuate and that the price or value of such securities and investments may rise or fall. Fluctuations in exchange rates could have adverse effects on the value of or price of, or income derived from, certain investments. Accordingly, investors may receive back less than originally invested. GIB Capital or its officers (including research analysts) may have a financial interest in securities of the issuer(s) or related investments, including long or short positions in securities, warrants, futures, options,

derivatives, or other financial instruments. GIB Capital may from time to time perform investment banking or other services for, solicit investment banking or other business from, any company mentioned in this research document. GIB Capital and employees shall not be liable for any direct, indirect, or consequential loss or damages that may arise, directly or indirectly, from any use of the information contained in this research document. Where the report contains or refers to a recommendation about a specific security or securities service, please note that it may not be suitable for all recipients. Please note that the achievement of any price target may be impeded by general market and economic trends and other external factors, or if a company's profits or operating performance exceed or fall short of our expectations

This research document and any recommendations contained are subject to change without prior notice. GIB Capital assumes no responsibility to update the information in this research document. This research document is not directed to, or intended for distribution to or use by, any person or entity who is a citizen or resident of or located in any locality, state, country, or other jurisdiction where such distribution, publication, availability, or use would be contrary to law, or which would subject GIB Capital to any registration or licensing requirement within such jurisdiction

The principal activities of GIB Capital are Dealing, Custody, Managing, Arranging, and Advising according to the Capital Market Authority ("CMA") License No. 07078-37.

Contact us for queries:

Sell Side Research Department,
GIB Capital,
B1, Granada Business & Residential Park,
Eastern Ring Road, P.O. Box 89589, Riyadh 11692