

Daily Market Report

2025-06-29

GIB | جي آي بي كابيتال
CAPITAL

Market Commentary & News

- ▶ **KSA Market Performance:** The TASI index rose by 0.9% on Thursday, with most sectors ending in the green. Ades was the top gainer, rising by 7.0%. All NGC, Zamil Industrial, and Cenomi retail increased by 5.1-5.7%. Petro Rabigh gained 4.8%. Conversely, SMC Healthcare declined by 3.3%. SAIC (-2.6%) and TALCO (-2.3%) fell. AlYamamah Steel (-2.0%) and Saudi German Health (-1.8%) also decreased.
- ▶ **Today's clues:** US indices closed in the green on Friday, with S&P 500 and Nasdaq reaching new record high amid trade deal hopes and Fed rate cut bets. Meanwhile, Asian markets ended mixed as investors monitored macro data releases in the region. Oil prices declined after reports emerged that the OPEC+ was planning output hike in August.

News

- ▶ Masar inked a SAR256mn sale contract with Home Investment Fund for a 2,500 sqm land plot within the Masar Destination project in Makkah (Tadawul).
- ▶ Solutions secured a SAR158mn, 5-year contract with STC for building a private cloud for STC's IT modernization (Tadawul).
- ▶ SAICO reported that it received final approval from the Insurance Authority for a new product related to Fine Arts (Tadawul).
- ▶ Enma Alrawabi reported that it sold its Al-Namothajiya Business Building in Riyadh for SAR21mn to AlNaseehah AlOula Investment with book value of SAR8.6mn (Tadawul).
- ▶ Atlas Elevators' 99%-owned subsidiary, Atlas National Elevators, secured a 20-year, SAR45,000 annual lease for an 11,250 sqm industrial plot in MODON (Tadawul).
- ▶ Alandalus Property Co. announced that it has completed the sale of its entire 70% stake in Al-Marwa Center to Saudi Tourism Development Company for SAR15mn (Tadawul).
- ▶ Go Telecom's 2025 net profit increased by 14.4% y/y and revenue rose by 43.9% y/y (Tadawul).
- ▶ The Saudi Water Authority secured a total of SAR2.4bn in financing from AIIB (SAR1.6bn) and Infra (SAR750mn) to upgrade the Jubail Phase 1 and Al Khobar Phase 2 desalination systems to more efficient RO technology (Argaam).
- ▶ According to GASTAT, KSA's imports from GCC increased 25% y/y to SAR7.3bn in April 2025 (Argaam).
- ▶ SADR logistics has completed construction and begun trial operations for its SADR Park Logistics Services Complex in Riyadh's Industrial Gate City, with commercial operations expected in 3Q25 (Tadawul).

Saudi Market	Last close	1D%	YTD%	1Y%
TASI	11,068	0.9%	-8.0%	-5.6%
Div Yield* (%)	4.4%	Turnover (SAR bn)	5.73	
PE* (Fwd)	14.5x	Adv/Decline	206 / 40	
PE (12m Trailing)	17.0x	50DMA	11,250	
PB	2.1x	100DMA	11,634	
M.Cap (SAR bn)	9,088	200DMA	11,824	

Global Markets	Last close	1D%	YTD%	P/E*
SPX	6,173	0.5%	5%	23.5x
Nasdaq	20,273	0.5%	5%	30.3x
FTSE 100	8,799	0.7%	8%	13.5x
DAX	24,033	1.6%	21%	16.8x
Shanghai	3,424	-0.7%	2%	13.4x
Nikkei	40,151	1.4%	1%	19.8x

Commodities	Spot	1D%	YTD%	1Y%
Brent (US\$/b)	67.8	0.1%	-9%	-22%
WTI (US\$/b)	65.5	0.4%	-6%	-12%
NG (US\$/mmbtu)	3.7	6.0%	3%	39%
Gold (US\$/t)	3,274	-1.6%	25%	41%
Copper (US\$/t)	9,878	-0.2%	13%	4%

Key Currencies	Spot	1D%	YTD%	1Y%
Dollar Index	97.4	0.3%	-10%	-8%
CNY/USD	7.2	-0.1%	2%	1%
USD/EUR	1.17	0.1%	13%	9%
USD/GBP	1.37	-0.1%	10%	9%
Bitcoin (US\$)	107,346	0.1%	15%	76%

Rates	Spot	% chg
SOFR (%) - Overnight	4.40	0.0
SAIBOR (%) - 3M	5.43	-3.6
SAIBOR (%) - 6M	5.58	-1.3
SAIBOR (%) - 12M	5.13	0.0
US 2Y Govt bond (%)	3.75	0.8
US 10Y Govt bond (%)	4.28	0.8
Saudi 10Y Govt Bond (%)	4.81	0.3

Source: Bloomberg, *1 year forward Bloomberg consensus

Daily Market Report

2025-06-29

Index Movers

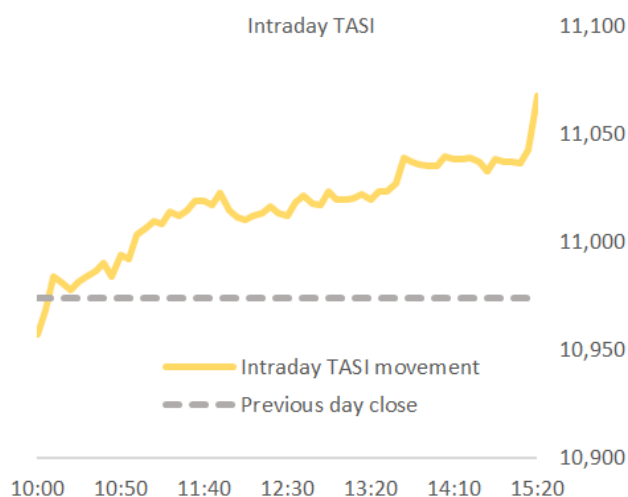
Up	1D%	Down	1D%
Al Rajhi	0.9%	Acwa Power	-0.9%
Aramco	0.7%	AlBilad	-0.8%
SNB	1.0%	Bupa	-0.9%
AlHabib	1.5%	SRMG	-0.4%
STC	0.9%	Chemical	-1.0%

Top Gainers	Last Price	1D%
ADES	13.82	7.0%
NGC	22.40	5.7%
Zamil	42.80	5.4%
Cenomi Retail	20.36	5.2%
PetroRabigh	7.18	4.8%

Top Losers	Last Price	1D%
SMC Healthcare	23.36	-3.3%
SAIC	26.75	-2.6%
Talco	43.10	-2.3%
Yamama Steel	30.00	-2.0%
Saudi German	55.00	-1.8%

Most active by Vol	Last Price	Vol
Americana	2.38	66.48MLN
Aramco	24.30	20.21MLN
TECO	0.80	15.18MLN
Chemical	6.85	12.08MLN
Al Baha	3.50	11.24MLN

Most active by Val	Last Price	Val (SAR mn)
Aramco	24.30	489
Al Rajhi	94.70	254
SNB	36.00	228
SMC Healthcare	23.36	185
Flynas	80.00	171



Sectorial Performance	Index mover*	1D%
TASI		0.9%
Banks	33.1%	0.8%
Materials	15.8%	1.3%
Energy	4.9%	0.7%
Telecom	4.3%	0.7%
Food & Bev.	3.4%	0.9%
Media	0.1%	0.1%
Healthcare	3.5%	1.2%
Capital Goods	1.8%	1.2%
Food & Staples	0.3%	0.5%
Consumer	1.3%	1.3%
Transport	0.3%	0.4%
Software	1.5%	1.3%
Commercial	0.0%	0.0%
Consumer Durables	0.5%	2.1%
Utilities	-0.5%	-0.1%
Insurance	3.0%	1.0%
Real Estate	6.0%	1.3%
Pharma	0.2%	0.7%
REITs	0.5%	0.8%
Retailing	1.0%	0.5%
Diversified Financials	0.4%	0.7%

Source: Bloomberg; *indicates the impact on index movement

Daily Market Report

2025-06-29



Disclaimer

This research report has been prepared by GIB Capital, Riyadh, Saudi Arabia. It has been prepared for the general use of GIB Capital's clients and may not be altered, redistributed, retransmitted, or disclosed, in whole or in part, or any form or manner, without the express written consent of GIB Capital. Receipt and review of this research document constitute your agreement not to redistribute, retransmit, or disclose to others the contents, opinions, conclusion, or information contained in this document before public disclosure of such information by GIB Capital. The information contained was obtained from various public sources believed to be reliable, but we do not guarantee its accuracy. GIB Capital makes no representations or warranties (express or implied) regarding the data and information provided and GIB Capital does not represent that the information content of this document is complete, or free from any error, not misleading, or fit for any particular purpose. This research document provides general information only. Neither the information nor any opinion expressed constitutes an offer or an invitation to make an offer, to buy or sell any securities or other investment products related to such securities or investments. It is not intended to provide personal investment advice and it does not take into account the specific investment objectives, financial situation, and the particular needs of any specific person who may receive this document.

Investors should seek financial, legal, or tax advice regarding the appropriateness of investing in any securities, other investment, or investment strategies discussed or recommended in this document and should understand that statements regarding prospects may not be realized. Investors should note that income from such securities or other investments, if any, may fluctuate and that the price or value of such securities and investments may rise or fall. Fluctuations in exchange rates could have adverse effects on the value of or price of, or income derived from, certain investments. Accordingly, investors may receive back less than originally invested. GIB Capital or its officers (including research analysts) may have a financial interest in securities of the issuer(s) or related investments, including long or short positions in securities, warrants, futures, options,

derivatives, or other financial instruments. GIB Capital may from time to time perform investment banking or other services for, solicit investment banking or other business from, any company mentioned in this research document. GIB Capital and employees, shall not be liable for any direct, indirect, or consequential loss or damages that may arise, directly or indirectly, from any use of the information contained in this research document. Where the report contains or refers to a recommendation about a specific security or securities service, please note that it may not be suitable for all recipients. Please note that the achievement of any price target may be impeded by general market and economic trends and other external factors, or if a company's profits or operating performance exceed or fall short of our expectations

This research document and any recommendations contained are subject to change without prior notice. GIB Capital assumes no responsibility to update the information in this research document. This research document is not directed to, or intended for distribution to or use by, any person or entity who is a citizen or resident of or located in any locality, state, country, or other jurisdiction where such distribution, publication, availability, or use would be contrary to law, or which would subject GIB Capital to any registration or licensing requirement within such jurisdiction

The principal activities of GIB Capital are Dealing, Custody, Managing, Arranging, and Advising according to the Capital Market Authority ("CMA") License No. 07078-37.

Contact us for queries:

Sell Side Research Department,
GIB Capital,
B1, Granada Business & Residential Park,
Eastern Ring Road, P.O. Box 89589, Riyadh 11692